

A Research Summary

Differences in death: comparing Autistic adults and non-Autistic adults in Ontario, Canada



Learn more about the research paper [here](#)



Trigger warning: death and dying



We recognize that the gender and sex spectrums include more identities than only 'male' and 'female'. These were the sexes included in this research.

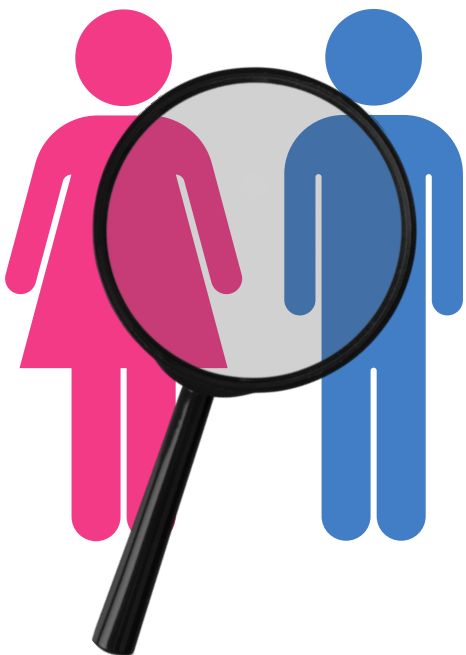
Why did we do this research?



To learn if Autistic adults **died earlier** than non-Autistic adults.

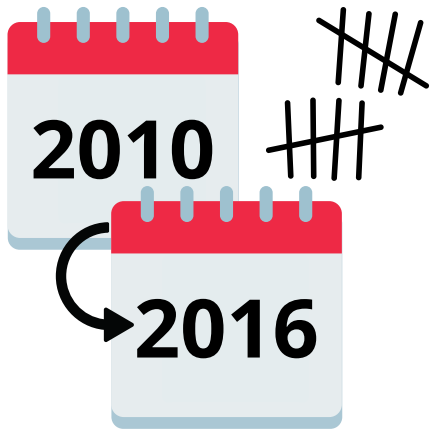


To learn if Autistic adults died of **different causes** than other adults.



To learn if females and males died from **different causes of death**.

What did we do?



We **counted** Autistic adults aged 65 and younger in Ontario who died between 2010 and 2016.



We looked at **what made** Autistic adults **die**.

We **compared** Autistic adults to two groups of people who were the same age:

1. **Non-Autistic** adults
2. Adults with **other developmental disabilities**



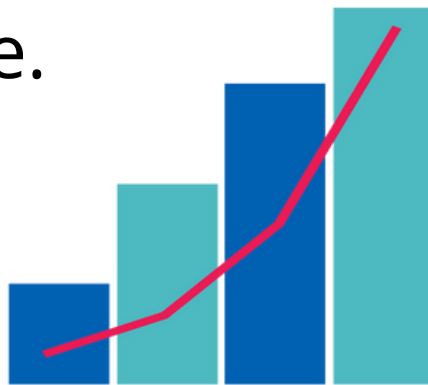
What did we learn?

We looked at people who were the same age and sex and we learned:

- 1) Autistic adults** were **three times more likely** to die early than people without developmental disabilities.



- 2) People with other developmental disabilities** were more likely to die than Autistic people.



- 3) Males and females** died of **different** causes.



So what?



More needs to be done to stop early death for Autistic adults and people with other developmental disabilities.

One way to do this is to encourage healthy living.



Healthy living includes **going to the doctor regularly when you are not sick and when you feel sick.**



People born male and female are different. Health care needs to be specific to each person's needs.

This summary is about a research article:
Amenable deaths among adults with intellectual and developmental disabilities including Down syndrome: An Ontario population-based cohort study
, published in the Journal of Applied Research in Intellectual Disabilities

We thank the self-advocate advisors who worked together with our team to write this summary.

camh | Azrieli Adult
Neurodevelopmental Centre



Health Care Access Research
and Developmental Disabilities

